



Capital Sewer Services Client List (Past and Present)

The City of Toronto
 The City of Winnipeg
 The Region of Halton
 The City of Ottawa
 The Region of Peel
 The City of Windsor
 The Town of Lincoln
 The County of Brant
 The United Counties of Stormont, Dundas and Glengarry
 The City of London
 The City of St. Thomas
 The City of Kitchener
 The City of Vaughan
 The City of Peterborough
 The City of Mississauga
 The City of Thunder Bay
 The Region of Peel
 The Town of Richmond Hill
 Capital Regional District (British Columbia)
 The Township of Langley (British Columbia)
 The City of Moncton (New Brunswick)
 The Village of Tweed
 CN Rail
 Bombardier Aerospace
 McKay Cocker Construction
 Counterpoint Engineering
 UMA Aecom Engineering

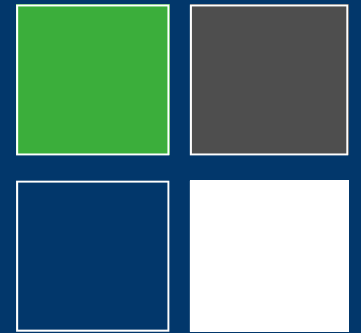
CONTACT INFORMATION

CAPITAL SEWER SERVICES
 389 KENORA AVENUE, HAMILTON, ONTARIO, L8E 2W3

PHONE—905-522-0522
 FAX—905-522-9319
 www.capitalsewer.com



Toll Free—1-877-536-3002



Services

Sewers

- High Pressure Water Flushing
- High Pressure Water Reaming
- CCTV Inspection
- Vacuum Tankers
- Robotic Reaming
- Confined Space Entry
- Smoke and Dye Testing

Trenchless Technologies

- Cured in Place Pipe Lining
- Manhole Rehabilitation
- CIPP Service Lateral Lining
- Large Diameter and Non-Circular Sewer Lining

Drain Services

- High Pressure Drain Flushing
- Broken pipe Locating
- CCTV Drain Locating
- Structure Vacuuming
- Pre-Planned Preventative Maintenance





A Proven Track Record



A PROVEN TRACK RECORD

Whether it is the busy downtown street or quiet residential suburb that must not be disturbed, Capital Sewer Services has a proven track record of providing outstanding solutions and service in the most challenging situations.



ONE STOP SHOP

Since being established in 1998, Capital has grown to one of the largest service providers in the buried infrastructure industry. From front line emergency call, sewer unblocking and cleaning to full length Cured in Place Pipe lining Capital offers a "One Stop Shop" approach to all waste water problems.

Whether the issue is a plugged parking lot catch basin or structurally deteriorating trunk sewer, Capital has the equipment, knowledge and staff compliment to efficiently deal with the problem.



Unequaled Service

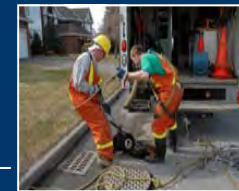


Our Services Include:

Full range of Sewer Flushing and Reaming Services

Designed to remove debris, silt, grease obstructions and calcium encrustation in pipe diameters from 75mm to 2000mm.

CCTV Inspection and Data Collection



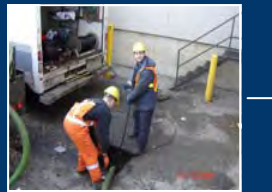
High resolution color inspection footage of up to 470 x 400 lines of resolution for the sharpest picture with maximum detail in pipe diameters from 50mm to 5000mm. Capitals proprietary Datalink program offers time linked playback with still photo capability on most office or mobile computers. Our Operators are NAAPI certified and fully trained in the WRC Sewer Classification Coding System.

Vacuum Services and Waste Hauling

Capital has a range of vacuum and combination vacuum/flusher trucks to suit our client's individual needs. Our low profile vacuum truck allows us to enter most height restricted areas, such as underground parking lots to evacuate waste from pump stations, catch basins, holding tanks etc.

Commercial Drainage

Our highly experienced commercial division runs on a 24 hour 7 days a week basis. Tackling the most demanding of jobs in the commercial and industrial sectors, from pre-planned preventative maintenance programs to emergency calls we have an arsenal of high pressure water jetting, electro mechanical and CCTV inspection equipment for the small diameter internal waste system.



Trenchless Technology

Capital Lining Services offer one of the largest dedicated teams for full length cured in place pipe lining in the business. Over 60 km of wastewater pipe work has been rehabilitated over the past 5 years.

Service Laterals have been recognized as one of the leading causes of infiltration and inflows. It has become a recognized practice to seal and rehabilitate these pipes using cured in place pipe technologies. Robotic Reaming. Remote cutting of protruding laterals, foreign objects etc.

